

Societal Costs of Schizophrenia & Related Disorders

Estimated Annual Cost of Schizophrenia in the US

\$281.6 BILLION

Reduced Quality of Life & Life Expectancy

\$73.5 BILLION

Supplemental Security & Social Security Disability Income (SSI/SSDI)

\$5.1 BILLION

Caregiver Burden & Unpaid Labor

\$104.5 BILLION

Non-employment & Reduced Wages

\$41.6 BILLION

Health Care Costs

\$27.2 BILLION

Justice System Interactions

\$2.3 BILLION

Incarceration*
(all costs including health care)

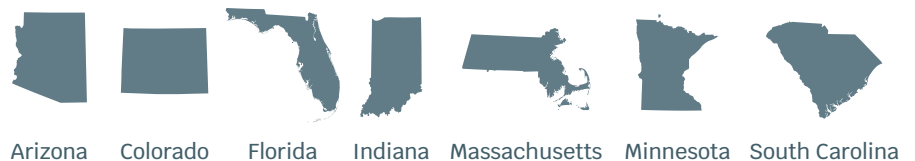
\$14.5 BILLION

Supportive Housing & Homelessness*

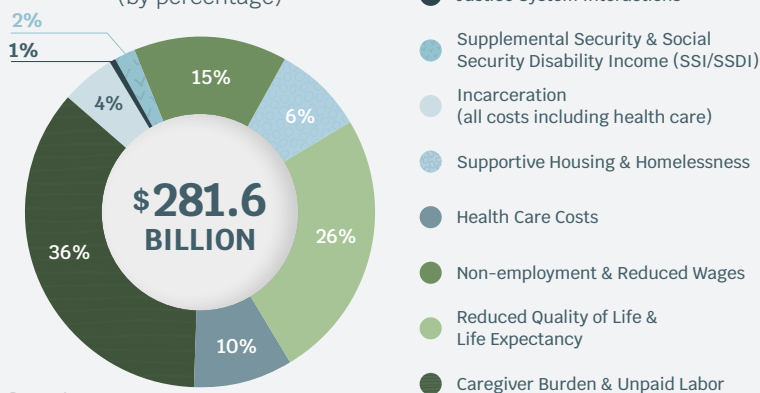
\$24.7 BILLION

*Cost of living offsets (\$11.9B) accounted for in total cost.

The total annual cost of schizophrenia in the US is equivalent to the combined state budgets of:



Cost Breakdown (by percentage)



2.65 MILLION[†]

Estimated number of people in the US living with schizophrenia

[†] Given the wide range of population estimates, this figure was calculated based on mid-point factor (0.8%).

For each person diagnosed at age 25, the estimated annual cost of schizophrenia is

\$92,000[‡]

[‡] Actual costs may vary by individual depending on course of illness and circumstances.